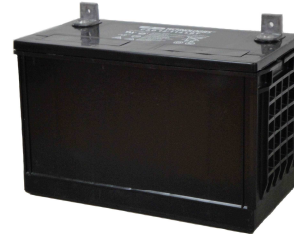




C&D 12-114 LBT

VALVE REGULATED LEAD ACID BATTERY FOR STANDBY POWER APPLICATIONS



12V 114 AH @ 20 HR Rate,

12V 347 Watts/Cell @ 15 Min Rate

FEATURES

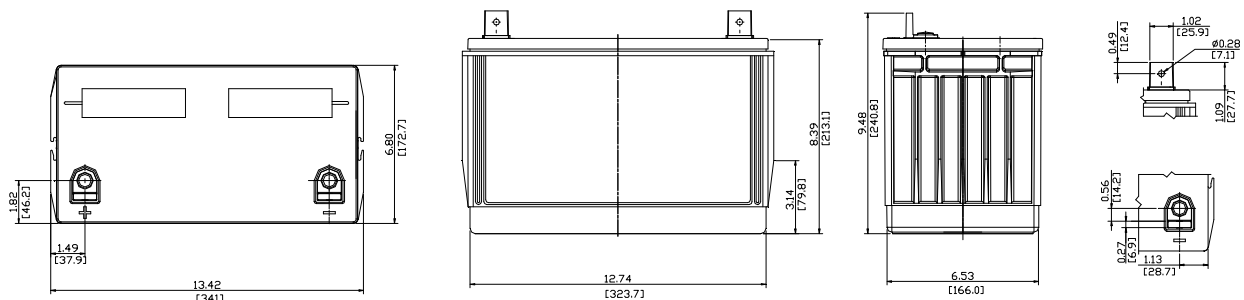
APPLICATIONS

- Telecommunications
- General Purpose Applications
- Uninterrupted Power Supply (UPS)
- Other Float Applications

- Design life: 7-10 years
- Robust plate for extended life.
- Flame-arresting one-way pressure-relief vent for safety and long life.
- Absorbent Glass Mat (AGM) technology for efficient gas recombination of up to 99% and freedom from electrolyte maintenance.
- UL-recognized component.
- Multicell design for economy of installation and maintenance.
- Can be used in any orientation. Upright, side, or end mounting recommended.
- Not restricted for air transport – Complies with IATA/ICAO Special Provision A67.
- Not restricted for surface transport – classified as non-hazardous material as related to DOT-CFR Title 49 parts 171-189
- Not restricted for water transport – classified as non-hazardous material per IMDG Amendment 27
- Computer designed lead, low Calcium alloy grid for minimal gassing and ease of recycling.

SPECIFICATIONS

Cells Per Unit	Voltage	Weight	Capacity		1 Min Current to 1.75VPC	Short Circuit Current	Resistance
6	12.98V	32.5 Kg	100 Ah (C10, 1.80V)	114 Ah (C20, 1.75V)	392 Amps	2647 Amps	4.7 (mΩ)



* All dimensions are in inches (mm). All dimensions are for reference only. Contact a C&D Representative for complete dimensional information.

SPECIFICATIONS

Operating Temperature Range with temperature compensation	Discharge: -40°F (-40°C) to +160°F (71°C). Charge: -10°F (-23°C) to +140°F (60°C)
Recommended Operating Temperature Range	+74°F (23°C) to +80°F (27°C).
Floating Charging Voltage	13.65 ± 0.15 VDC/unit Average at 77°F (25°C).
Recommended Maximum Charging Current Limit	C/5 amperes @ 20 hr. rate.
Equalization and Cycle Service Charging Voltage	14.4 to 14.8 VDC/unit Average at 77°F (25°C).
Maximum AC Ripple (Charger)	0.5% RMS or 1.5% P-P of float charge voltage recommended for best results. Maximum voltage allowed = 1.4% RMS (4% P-P). Maximum current allowed = 5.10 amperes RMS (C/20).
Self Discharge	Batteries may be stored for up to 6 months at 77°F (25°C) and then a freshening charge is required. For higher temperatures the time interval will be shorter.
Accessories	Inter unit connectors, racks and cabinet systems are available.
Terminal: L	"L" terminal with 0.28" clearance hole to accept 0.25" (6mm) bolt.
Container Materials	PP (UL-94 HB)

Constant Power Discharge Table - Watts Per Cell @ 25°C (77°F)

Operating Time to End Point Voltage

End Voltage Per Cell	Min					Hour											
	5	10	15	30	60	2	3	4	5	6	7	8	9	10	12	20	24
1.85	397.5	329.8	274.3	189.4	129.3	73.0	52.1	41.0	34.1	29.2	25.7	23.0	20.8	19.1	16.4	10.6	9.1
1.80	468.8	379.3	307.3	204.2	135.5	76.0	54.0	42.4	35.1	30.1	26.4	23.6	21.4	19.5	16.7	10.8	9.2
1.75	513.6	405.2	327.3	214.2	138.9	77.6	55.1	43.2	35.7	30.6	26.8	23.9	21.7	19.8	16.9	10.9	9.3
1.70	551.9	428.5	339.3	219.8	140.2	78.2	55.5	43.5	36.0	30.8	27.0	24.1	21.8	19.9	17.0	11.0	9.4
1.67	558.8	435.0	346.3	222.4	141.0	78.6	55.7	43.7	36.1	30.9	27.1	24.2	21.9	20.0	17.1	11.0	9.4
1.65	565.4	442.1	351.3	224.8	141.1	78.9	55.9	43.8	36.2	31.0	27.2	24.2	21.9	20.0	17.1	11.0	9.4

Constant Current Discharge Table - Amps @ 25°C (77°F)

Operating Time to End Point Voltage

End Voltage Per Cell	Min					Hour											
	5	10	15	30	60	2	3	4	5	6	7	8	9	10	12	20	24
1.85	201.0	188.0	156.0	102.6	63.5	36.9	26.4	20.7	17.2	14.9	13.1	11.7	10.6	9.7	8.40	5.50	4.72
1.80	256.6	216.2	172.0	111.2	68.5	38.8	27.6	21.6	17.9	15.4	13.5	12.1	11.0	10.0	8.67	5.65	4.85
1.75	274.0	221.0	176.0	114.8	70.3	39.5	28.3	22.1	18.3	15.8	13.8	12.3	11.1	10.2	8.80	5.71	4.89
1.70	294.0	233.0	182.0	118.0	71.3	39.9	28.2	22.2	18.3	15.8	13.9	12.4	11.2	10.3	8.90	5.80	4.98

* All data shall be changed without prior notice, C&D reserves the right to explain and update the information contained hereinto.