



C&D 12-12A LBT

VALVE REGULATED LEAD ACID BATTERY FOR STANDBY POWER APPLICATIONS



12V 12 AH @ 20 HR Rate,

12V 44 Watts/Cell @ 15 Min Rate

FEATURES

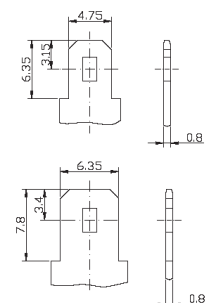
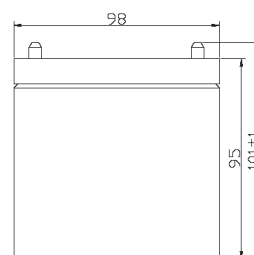
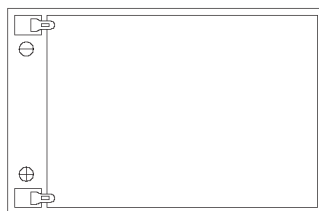
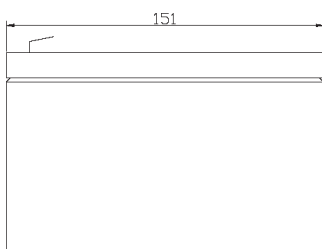
APPLICATIONS

- Telecommunications
- General Purpose Applications
- Uninterrupted Power Supply (UPS)
- Other Float Applications

- Design life: 5 years
- Flame-arresting one-way pressure-relief vent for safety and long life.
- Absorbent Glass Mat (AGM) technology for efficient gas recombination of up to 99% and freedom from electrolyte maintenance.
- Multicell design for economy of installation and maintenance.
- Computer designed lead, low Calcium alloy grid for minimal gassing and ease of recycling.
- UL-recognized component.
- Can be used in upright, side, or end mounting orientation.
- Not restricted for air transport – Complies with IATA/ICAO Special Provision A67.
- Not restricted for surface transport – classified as non-hazardous material as related to DOT-CFR Title 49 parts 171-189
- Not restricted for water transport – classified as non-hazardous material per IMDG Amendment 27

SPECIFICATIONS

Cells Per Unit	Voltage	Weight	IEC Rating (C10, 1.80V @ 20°C)	Capacity (C20, 1.75V @ 25°C)	Short Circuit Current	Resistance
6	12 V	3.6 Kg	11 Ah	12 Ah	300 Amps	16 (mΩ)



* All dimensions are in mm. All dimensions are for reference only. Contact a C&D Representative for complete dimensional information.

SPECIFICATIONS

Operating Temperature Range	Discharge: -20°C to 60°C; Charge: 0°C to 50°C; Storage: -20°C to 60°C
Recommended Operating Temperature Range	25°C ± 5°C
Floating Charging Voltage	13.7 to 13.9 VDC/unit Average at 25°C
Recommended Maximum Charging Current Limit	3.6A
Equalization and Cycle Service Charging Voltage	14.6 to 14.8 VDC/unit Average at 25°C
Maximum Discharging Current Limit	120A (5 Sec)
Self Discharge	Batteries may be stored for up to 6 months at 25°C, and self-discharge rate less than 3% per month. Please charging the battery before using.
Accessories	Inter unit connectors, racks and cabinet systems are available
Terminal	Faston Tab 187/ Faston Tab 250
Container and Cover Material	ABS(UL94 HB)

Constant Power Discharge Table - Watts Per Cell @ 25°C (77°F)

Operating Time to End Point Voltage

EPV	5 min	10 min	15 min	20 min	25 min	30 min	45 min	60 min	90 min	2 hr	3 hr	4 hr	5 hr	8 hr	10 hr	12 hr	20 hr
1.85	57.4	44.3	36.5	34.7	28.0	24.3	17.5	14.9	11.3	8.57	5.93	4.81	3.91	2.49	2.07	1.73	0.96
1.80	65.1	47.6	38.8	35.8	28.8	25.0	17.9	15.2	11.4	8.89	6.05	4.86	3.95	2.51	2.10	1.74	0.98
1.75	72.1	50.9	41.1	36.7	29.5	25.6	18.3	15.4	11.5	8.96	6.12	4.88	3.99	2.52	2.14	1.77	1.05
1.70	79.1	53.1	43.3	37.1	30.0	26.2	18.6	15.6	11.5	9.04	6.15	4.92	4.04	2.54	2.16	1.79	1.08
1.67	83.1	55.3	44.0	37.6	30.3	26.4	18.9	15.8	11.5	9.10	6.17	4.96	4.08	2.56	2.18	1.81	1.11
1.65	84.1	56.0	44.4	38.1	30.7	26.7	19.1	16.0	11.7	9.10	6.18	4.97	4.09	2.57	2.19	1.82	1.12

Constant Current Discharge Table - Amps @ 25°C (77°F)

Operating Time to End Point Voltage

EPV	5 min	10 min	15 min	30 min	60 min	90 min	2 hr	3 hr	4 hr	5 hr	6 hr	7 hr	8 hr	10 hr	12 hr	20 hr	24 hr
1.90	39.1	22.0	20.3	10.6	6.8	5.0	3.90	2.72	2.23	1.83	1.56	1.37	1.22	1.04	0.90	0.53	0.45
1.85	28.6	22.0	18.2	11.7	7.3	5.5	4.29	2.99	2.45	2.01	1.66	1.46	1.30	1.11	0.94	0.55	0.47
1.80	32.9	24.1	19.8	12.2	7.6	5.7	4.47	3.05	2.47	2.03	1.72	1.48	1.32	1.12	0.96	0.57	0.48
1.75	37.0	26.0	21.0	12.6	7.7	5.7	4.51	3.09	2.48	2.05	1.76	1.49	1.33	1.14	0.97	0.61	0.51

* All data shall be changed without prior notice, C&D reserves the right to explain and update the information contained hereinto.