



**MULTI
PURPOSE
SERIES**

MPS 12-12A

**VALVE REGULATED LEAD ACID BATTERY
FOR STANDBY POWER APPLICATIONS**

**12V 12 AH @ 20 HR Rate,
12V 44 Watts/Cell @ 15 Min Rate**



FEATURES

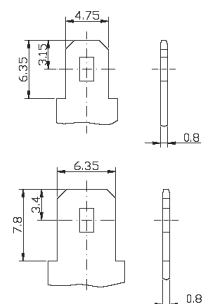
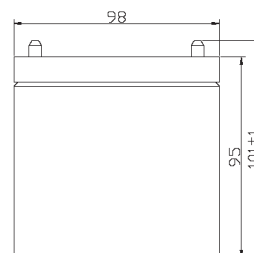
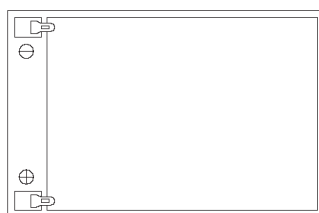
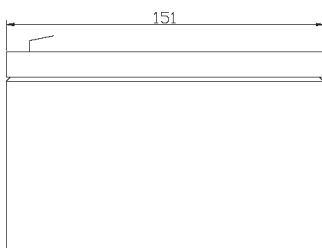
APPLICATIONS

- Telecommunications
- General Purpose Applications
- Uninterrupted Power Supply (UPS)
- Other Float Applications

- Design life: 5 year
- Robust plate for extended life.
- Flame-arresting one-way pressure-relief vent for safety and long life.
- Absorbent Glass Mat (AGM) technology for efficient gas recombination of up to 99% and freedom from electrolyte maintenance.
- Multicell design for economy of installation and maintenance.
- Computer designed lead, low Calcium alloy grid for minimal gassing and ease of recycling.
- UL-recognized component.
- Can be used in upright, side, or end mounting orientation.
- Not restricted for air transport – Complies with IATA/ICAO Special Provision A67.
- Not restricted for surface transport – classified as non-hazardous material as related to DOT-CFR Title 49 parts 171-189
- Not restricted for water transport – classified as non-hazardous material per IMDG Amendment 27

SPECIFICATIONS

Cells Per Unit	Voltage Per Unit	Weight	IEC Rating (C10, 1.80V @ 20°C)	Capacity (C20, 1.75V @ 25°C)	Watts/Cell @ 15min	Short Circuit Current	Resistance
6	12 V	3.6 Kg	11 Ah	12 Ah	44	300 Amps	16 (mΩ)



*All dimensions in millimeters. All dimensions are for reference only. Contact a C&D Representative for complete dimensional information.

SPECIFICATIONS

Operating Temperature Range with temperature compensation	Discharge: -20°C to 60°C Charge: 0°C to 50°C
Recommended Operating Temperature Range	23°C to 27°C
Floating Charging Voltage	13.7 to 13.9 VDC/unit Average at 77°F (25°C).
Recommended Maximum Charging Current Limit	C/5 amperes @ 20 hr. rate.
Equalization and Cycle Service Charging Voltage	14.4 to 14.8 VDC/unit Average at 77°F (25°C).
Maximum AC Ripple (Charger)	0.5% RMS or 1.5% P-P of float charge voltage recommended for best results. Maximum voltage allowed = 1.4% RMS (4% P-P). Maximum current allowed = 5.10 amperes RMS (C/20).
Self Discharge	MPS batteries may be stored for up to 6 months at 77°F (25°C) and then a freshening charge is required. For higher temperatures the time interval will be shorter.
Accessories	Inter unit connectors, racks and cabinet systems are available.
Terminal:	Faston Tab 187/Faston tab 250
Container and Cover Materials	ABS (UL-94 HB)

Constant Power Discharge Ratings Watts Per Cell @ 77°F (25°C)

Operating Time to End Point Voltage

EPV	5 min	10 min	15 min	20 min	25 min	30 min	45 min	60 min	90 min	2 hr	3 hr	4 hr	5 hr	8 hr	10 hr	12 hr	20 hr
1.85	57.6	44.5	36.7	34.9	28.1	24.5	17.7	15.1	11.5	8.8	6.1	5.0	4.1	2.7	2.3	1.9	1.1
1.80	65.3	47.8	39.0	36.0	29.0	25.2	18.1	15.4	11.6	9.1	6.2	5.0	4.1	2.7	2.3	1.9	1.2
1.75	72.3	51.1	41.3	36.9	29.7	25.8	18.4	15.6	11.7	9.2	6.3	5.1	4.2	2.7	2.3	2.0	1.2
1.70	79.3	53.3	43.5	37.3	30.2	26.3	18.8	15.8	11.7	9.2	6.3	5.1	4.2	2.7	2.4	2.0	1.3
1.67	83.3	55.5	44.1	37.8	30.5	26.6	19.1	15.9	11.7	9.3	6.4	5.2	4.3	2.8	2.4	2.0	1.3
1.65	84.3	56.2	44.6	38.3	30.9	26.9	19.3	16.1	11.9	9.3	6.4	5.2	4.3	2.8	2.4	2.0	1.3

Constant Current Discharge Ratings - Amperes @ 77°F (25°C)

Operating Time to End Point Voltage

EPV	5 min	10 min	15 min	30 min	60 min	90 min	2 hr	3 hr	4 hr	5 hr	6 hr	7 hr	8 hr	10 hr	12 hr	20 hr	24 hr
1.90	41.1	23.2	21.1	11.0	7.0	5.1	4.0	2.8	2.3	1.9	1.6	1.4	1.2	1.1	0.9	0.5	0.5
1.85	30.6	23.2	19.0	12.1	7.5	5.6	4.4	3.1	2.5	2.0	1.7	1.5	1.3	1.1	0.9	0.6	0.5
1.80	34.9	25.3	20.6	12.6	7.8	5.8	4.6	3.1	2.5	2.1	1.8	1.5	1.3	1.1	1.0	0.6	0.5
1.75	39.0	27.2	21.8	13.0	7.9	5.9	4.6	3.2	2.5	2.1	1.8	1.5	1.4	1.2	1.0	0.6	0.5

Note: Batteries to be mounted with 0.5 in. (1.25 cm) spacing minimum and free air ventilation. Specifications subject to change without notification.