



TRUE FRONT ACCESS



TEL 12-105FN5G, TEL 12-115FNG
TEL 12-155FG, TEL 12-170FG
TEL 12-190FG, TEL 12-210FG

Valve Regulated Lead Acid Battery

Designed for Telecom Standby Power Applications



THE MOMENT OF TRUTH HAS ARRIVED

TRUE Performance - 100% out of box capacity ratings at installation

TRUE Front Access Terminals - ensuring reliability & connection versatility

TRUE High Energy Density - highest true energy density solution in the market

TRUE Long life design - Telcordia SR-4228 industry leading over 10 year service life

TRUE Flexibility - multiple models to fit each customers power system demands



APPLICATIONS:

- Wireline
- Wireless
- Customer Premise / PBX
- Broadband
- Microwave Repeater
- Fiber Optic Regen Sites

INDOOR / OUTDOOR INSTALLATIONS

- Sealed Cabinet Systems
- Rack Systems

FEATURES AND BENEFITS

- Long life alloy and over 10 years design life.
- Tested and qualified by Telcordia to meet SR-4228 requirements.
- True Front Access threaded copper alloy inserts for reduced maintenance and increased safety.
- Terminal versatility - ease of diagnostic readings with C&D Ohmic Ring®.
- Reduced headspace driving higher energy density, in cabinet or rack applications.
- Removable handles for ease of installation.
- Innovative front terminal design maximizing energy density with direct connect extrusion fusion weld technology.
- Thermally welded case to cover bond to ensure a leak-proof seal.
- Flame-retardant polypropylene case and cover compliant with UL94 V-0 with an Oxygen Limiting Index of greater than 28.
- Absorbent Glass Mat (AGM) technology for efficient gas recombination of over 99%.
- Flame-arresting, one-way pressure-relief vent for safety and long life.
- Complies with UL 1778, 924, 1989 and 94 V-0, BS6290-4, IEC60896.
- UL recognized components
- Can be used in upside, side or end mounting orientation.
- Multicell design for ease of installation and maintenance.
- Not restricted for air transport - Complies with IATA/ICAO Special Provisions A67.
- Not restricted for surface transport - Classified as non-hazardous material as related to DOT-CFR Title 49 parts 171-189
- Not restricted for water transport - Classified as non-hazardous material per IMDG Amendment 27.

Specifications

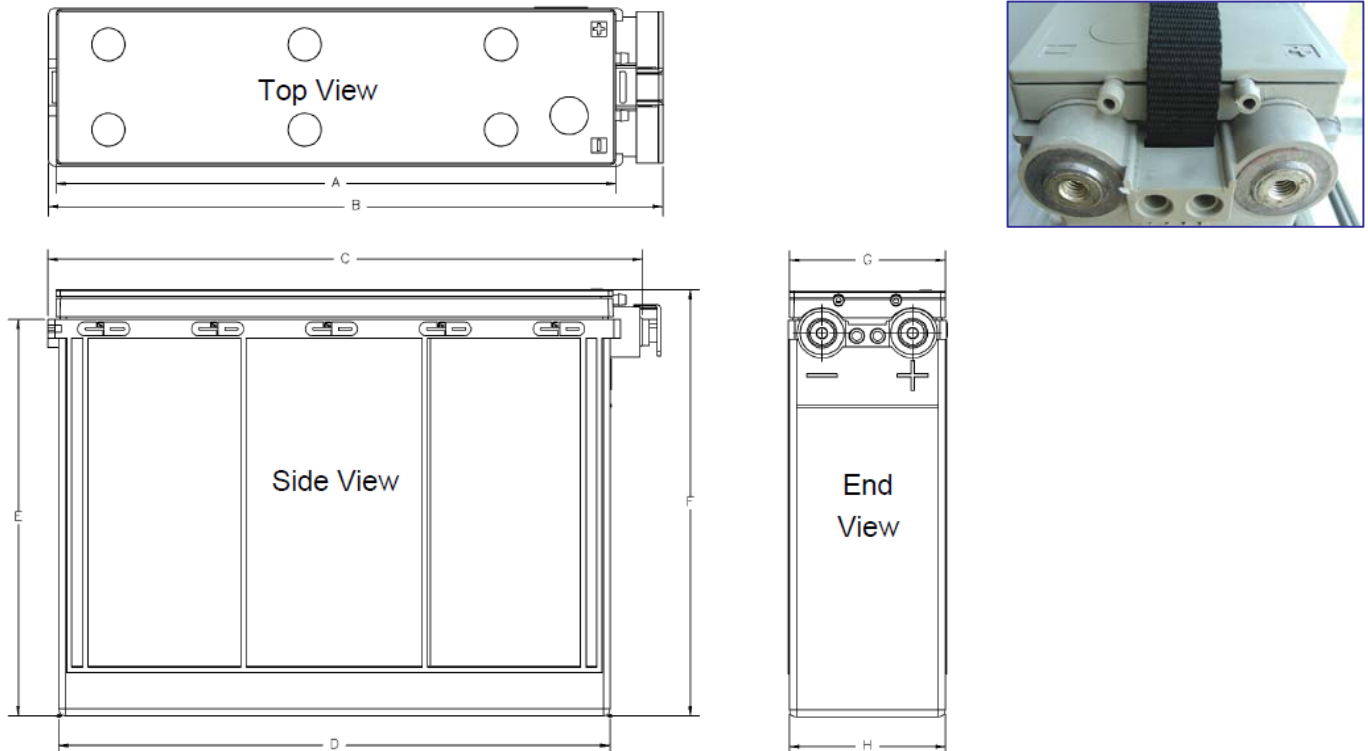
12 Volt Ampere Hour Capacity

Ampere Hour Capacity to 1.75 Volts per Cell @ 25°C (77°F)
Discharge in Hours

Model	1	2	3	4	5	6	7	8	9	10	12	14	16	18	20	24	36	48	72
TEL 12-105 FNSG	70.1	79.6	85.5	90.2	93.5	95.7	97.7	99.7	100.6	101.9	104.2	106.1	107.8	109.3	110.7	113.2	118.8	116.7	118.8
TEL 12-115 FNG	68.6	79.0	85.8	91.0	95.5	98.4	100.8	104.0	104.2	105.6	108.1	110.3	112.2	113.8	115.4	118.1	124.3	121.8	124.0
TEL 12-155 FG	96.7	117.8	126.4	132.3	137.1	141.1	144.6	147.7	150.5	153.0	157.5	161.4	164.8	167.9	170.7	175.7	187.4	181.2	184.5
TEL 12-170 FG	109.0	124.3	135.2	142.8	149.0	153.3	157.5	162.4	166.5	167.7	170.4	172.7	174.7	176.5	178.1	180.9	187.4	186.6	189.9
TEL 12-190 FG	125.7	144.8	156.0	164.0	171.0	175.2	179.9	182.8	185.9	188.0	190.8	193.2	195.3	197.2	200.0	202.8	209.2	209.1	212.9
TEL 12-210 FG	132.7	159.0	168.6	176.0	182.0	186.6	191.1	194.8	198.0	201.0	205.8	209.9	213.6	216.9	220.2	226.0	239.5	233.1	237.3

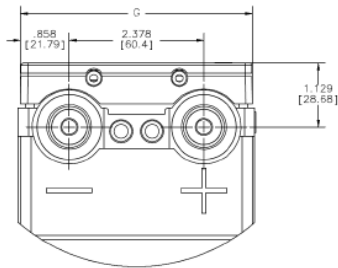
Battery Model	Voltage Per Unit	Ampere Hours Capacity 8 Hour Rate @ 77°F (25°C) to 1.75EPV per cell	Ampere Hours Capacity 10 Hour Rate @ 68°F (20°C) to 1.80EPV per cell	IEC Short Circuit Current (A)	IEC Resistance (mOhms)	Weight
TEL 12-105FNSG	12V	100 Ah	98 Ah	1954	6.5	32.8 kg
TEL 12-115 FNG	12V	104 Ah	101 Ah	2229	5.6	33 kg
TEL 12-155 FG	12V	148 Ah	147 Ah	2327	5.4	47.3 kg
TEL 12-170 FG	12V	162 Ah	163 Ah	2630	4.8	49 kg
TEL 12-190 FG	12V	183 Ah	180 Ah	2923	4.3	56.7 kg
TEL 12-210 FG	12V	195 Ah	192 Ah	2982	4.2	60.2 kg

Dimensions

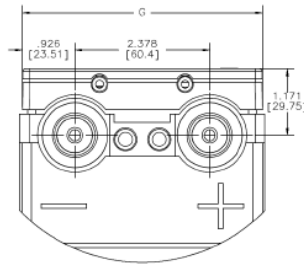


Model	A		B		C		D		E		F		G		H	
	in.	mm	in.	mm	in.	mm	in.	mm	in.	mm	in.	mm	in.	mm	in.	mm
TEL 12-105FNSG	14.70	373.32	16.14	410.00	15.66	397.74	14.53	369.01	10.52	267.28	11.36	288.50	4.20	106.62	4.09	103.99
TEL 12-115FNG	18.63	473.31	20.10	510.53	19.62	498.28	18.49	469.54	8.47	215.22	9.31	236.45	4.33	109.98	4.25	107.95
TEL 12-155FG	20.30	515.59	21.99	558.52	21.52	546.51	20.16	512.17	10.59	268.86	11.22	284.95	4.95	125.73	4.86	123.39
TEL 12-170FG	20.30	515.59	21.99	558.52	21.52	546.51	20.16	512.17	10.59	268.86	11.22	284.95	4.95	125.73	4.86	123.39
TEL 12-190FG	20.29	515.47	21.99	558.52	21.52	546.51	20.16	512.17	12.22	310.31	12.91	327.85	4.95	125.73	4.86	123.39
TEL 12-210FG	20.29	515.47	21.99	558.52	21.52	546.51	20.16	512.17	12.22	310.31	12.91	327.85	4.95	125.73	4.86	123.39

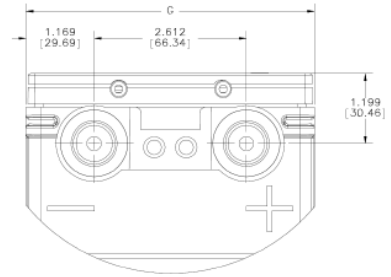
Detail of Terminal



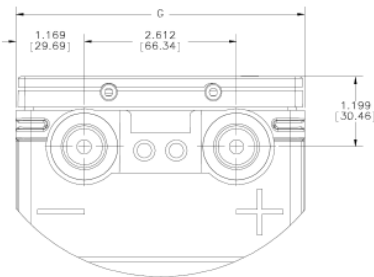
TEL 12-105FNSG



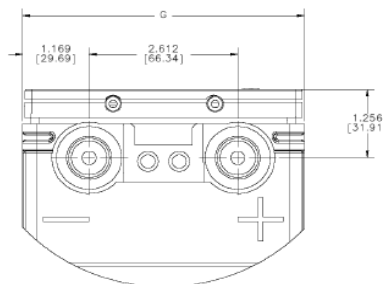
TEL 12-115FNG



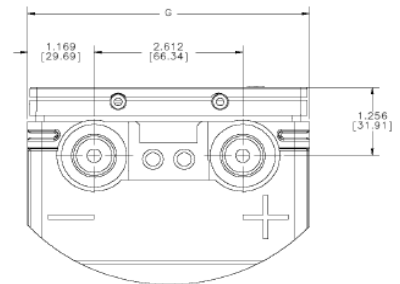
TEL 12-170FG



TEL 12-155FG



TEL 12-190FG



TEL 12-210FG

*All dimensions are for reference only. Contact a C&D Representative for complete dimensional information.

Specifications

Operating Temperature Range with temperature compensation	Discharge: -40° F (-40°C) to +160°F (71°C) Charge: -10°F (-23°C) to +140°F (60°C)
Nominal Operating Temperature Range	+74° F (23°C) to +80°F (27°C)
Recommended Maximum Charging Current Limit	C/5 amperes @ 20hr rate
Float Charging Voltage	13.65 ± 0.15 VDC average per 12V unit
Maximum AC Ripple (Charger)	0.5% RMS or 1.5% P-P of float charge voltage recommended for best results. Max voltage allowed = 1.4% RMS (4% P-P) Max current allowed = C/20
Self Discharge	Battery can be stored up to 6 months at 77° F (25°C) before a freshening charge is required. Batteries stored at temperatures greater than 77°F (25°C) will require recharge sooner than batteries stored at lower temperatures. See C&D brochure 41-7272, Self-Discharge and Inventory Control for details.
Equalize charge and cycle service voltage	14.40 to 14.80 VDC average per 12V unit @ 77° F (25°C)
Terminal	Threaded copper alloy insert terminal to accept: M8 bolt (TEL12-105 FNSG, TEL12-155 FG, TEL12-170FG, TEL 12-190 FG, TEL12-210 FG) M6 bolt (TEL12-115 FNG)
Terminal Hardware Initial Torque	160 in.-lbs. (18 N-m) for: TEL12-105 FNSG, TEL12-155 FG, TEL12-170FG, TEL 12-190 FG, TEL12-210 FG 107 in.-lbs (12 N-m) for TEL12-115 FNG

Constant Current Discharge Table - Amps @ 25°C (77°F)

TEL 12-105FNSG

Operating Time (hrs)

EPV	1	2	3	4	5	6	7	8	9	10	12	14	16	18	20	24	36	48	72
1.75	70.1	39.8	28.5	22.6	18.7	16.0	14.0	12.5	11.2	10.2	8.7	7.578	6.7	6.1	5.5	4.7	3.3	2.4	1.7
1.80	68.8	38.9	27.9	22.0	18.3	15.7	13.7	12.2	11.0	10.0	8.5	7.4	6.6	5.9	5.4	4.6	3.2	2.3	1.6
1.85	63.6	36.3	26.1	20.7	17.2	14.9	13.1	11.7	10.6	9.6	8.2	7.136	6.3	5.7	5.2	4.4	3.1	2.3	1.5
1.90	56.3	32.6	23.6	18.8	15.8	13.6	12.1	10.8	9.7	8.9	7.5	6.6	5.8	5.3	4.8	4.1	2.8	2.1	1.4

TEL 12-115FNG

Operating Time (hrs)

EPV	1	2	3	4	5	6	7	8	9	10	12	14	16	18	20	24	36	48	72
1.75	68.6	39.5	28.6	22.8	19.1	16.4	14.4	13.0	11.6	10.6	9.0	7.876	7.0	6.3	5.8	4.9	3.5	2.5	1.7
1.80	67.2	38.7	28.0	22.3	18.7	16.1	14.1	12.6	11.3	10.4	8.8	7.7	6.9	6.2	5.7	4.8	3.4	2.5	1.7
1.85	63.2	36.8	26.7	21.3	17.9	15.5	13.6	12.1	10.9	9.9	8.5	7.432	6.6	6.0	5.5	4.7	3.3	2.4	1.6
1.90	56.5	33.4	24.6	19.8	16.7	14.5	12.7	11.3	10.2	9.3	8.0	7.0	6.2	5.6	5.1	4.4	3.1	2.3	1.5

TEL 12-155FG

Operating Time (hrs)

EPV	1	2	3	4	5	6	7	8	9	10	12	14	16	18	20	24	36	48	72
1.75	96.7	58.9	42.1	33.1	27.4	23.5	20.7	18.5	16.7	15.3	13.1	11.5	10.3	9.3	8.5	7.3	5.2	3.8	2.6
1.80	93.5	57.8	41.1	32.3	26.8	23.0	20.2	18.1	16.4	15.0	12.9	11.3	10.1	9.2	8.4	7.2	5.1	3.7	2.5
1.85	86.4	54.4	39.0	30.7	25.6	22.0	19.4	17.4	15.8	14.4	12.4	10.9	9.8	8.9	8.2	7.0	5.0	3.6	2.5
1.90	77.3	49.1	35.4	28.0	23.4	20.2	17.8	16.0	14.6	13.4	11.5	10.2	9.1	8.3	7.6	6.6	4.7	3.4	2.3

TEL 12-170FG

Operating Time (hrs)

EPV	1	2	3	4	5	6	7	8	9	10	12	14	16	18	20	24	36	48	72
1.75	109.0	62.1	45.1	35.7	29.8	25.6	22.5	20.3	18.5	16.8	14.2	12.33	10.9	9.8	8.9	7.5	5.2	3.9	2.6
1.80	106.0	61.5	44.2	35.0	29.2	25.1	22.2	20.1	18.3	16.6	14.0	12.2	10.7	9.6	8.7	7.4	5.1	3.8	2.6
1.85	98.0	57.9	41.8	33.2	27.8	24.1	21.3	19.3	17.6	16.0	13.5	11.69	10.3	9.3	8.4	7.1	4.9	3.7	2.5
1.90	87.6	52.0	38.0	30.4	25.6	22.2	19.6	17.7	16.2	14.7	12.3	10.7	9.4	8.4	7.7	6.5	4.4	3.3	2.3

TEL 12-190FG

Operating Time (hrs)

EPV	1	2	3	4	5	6	7	8	9	10	12	14	16	18	20	24	36	48	72
1.75	125.7	72.4	52.0	41.0	34.2	29.2	25.7	22.9	20.7	18.8	15.9	13.8	12.2	11.0	10.0	8.5	5.8	4.4	3.0
1.80	121.0	70.6	50.7	40.0	33.4	28.6	25.1	22.4	20.2	18.4	15.6	13.6	12.0	10.8	9.9	8.4	5.7	4.3	2.9
1.85	111.4	67.2	48.2	38.1	31.7	27.2	23.9	21.4	19.4	17.6	15.0	13.2	11.7	10.6	9.5	8.1	5.6	4.2	2.8
1.90	98.0	61.1	44.1	34.9	29.1	25.1	22.2	19.9	18.1	16.5	14.0	12.2	10.8	9.7	8.9	7.5	5.2	3.9	2.6

TEL 12-210FG

Operating Time (hrs)

EPV	1	2	3	4	5	6	7	8	9	10	12	14	16	18	20	24	36	48	72
1.75	132.7	79.5	56.2	44.0	36.4	31.1	27.3	24.4	22.0	20.1	17.2	15	13.4	12.0	11.0	9.4	6.7	4.9	3.3
1.80	128.3	77.7	54.9	42.9	35.5	30.3	26.6	23.7	21.4	19.6	16.7	14.6	13.0	11.8	10.8	9.2	6.5	4.7	3.2
1.85	117.6	73.3	52.0	40.7	33.7	28.8	25.3	22.6	20.4	18.7	16.0	14.04	12.5	11.3	10.4	8.9	6.3	4.6	3.1
1.90	104.3	66.6	47.4	37.3	30.9	26.5	23.3	20.9	18.9	17.3	14.9	13.1	11.7	10.6	9.7	8.3	5.9	4.3	2.9

* Note: F= True Front Access , N= Narrow width format, S= Short Depth, G= Central Gas Collection System

* All data shall be changed without prior notice, C&D reserves the right to explain and update the information contained hereinto.